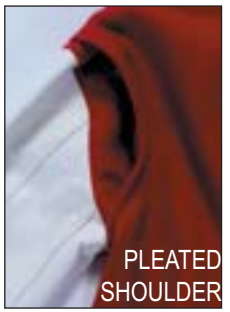


- Pleated Bi-Swing Shoulder
- 24 oz. Melton Wool
- Quilt or Nylon Lining
- Leather, Naugahyde, or Matching Wool Sleeves
- Standard snap closure (zipper optional)
- Knit cuffs and waist
- Choose collar style and knit trim pattern
- Optional leather waistband insert
- Optional self-material cuffs
- Optional inside welt or patch pockets
- Sizes: Adult XS-4XL
Youth XS-XL



PLEATED SHOULDER

TRADITIONAL SLEEVE

Sleeve	Size	Lining	Style
Leather	Adult	Nylon	131A
	Adult	Quilt	231A
	Youth	Nylon	161A
	Youth	Quilt	261A
Naugahyde	Adult	Nylon	134A
	Adult	Quilt	234A
	Youth	Nylon	164A
	Youth	Quilt	264A
Wool	Adult	Nylon	136A
	Adult	Quilt	236A
	Youth	Nylon	166A
	Youth	Quilt	266A

Chenille is not supplied by DeLong.