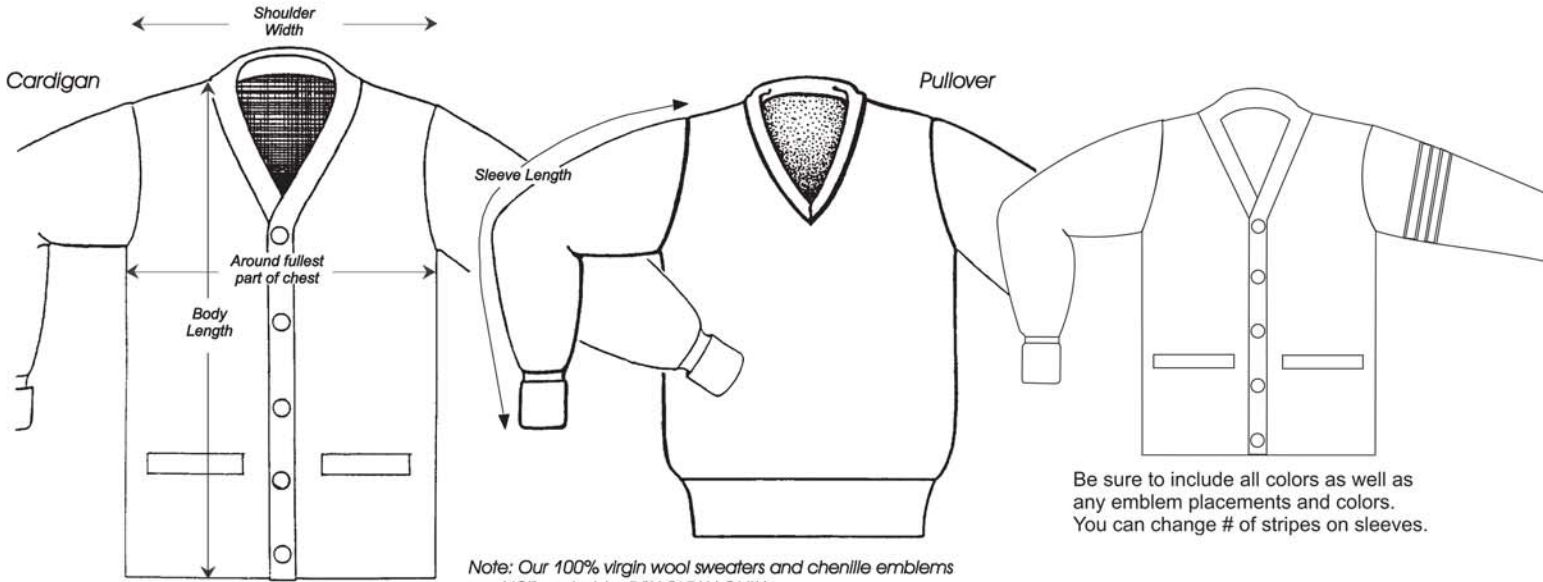




# All Seasons Sportswear

Please read important sizing information at bottom of this page!



Be sure to include all colors as well as any emblem placements and colors. You can change # of stripes on sleeves.

## CARDIGAN STYLE

	XS	S	M	L	XL	XXL	3XL							
<b>Size</b>	<b>32</b>	<b>34</b>	<b>36</b>	<b>38</b>	<b>40</b>	<b>42</b>	<b>44</b>	<b>46</b>	<b>48</b>	<b>50</b>	<b>52</b>	<b>54</b>	<b>56</b>	<b>58</b>
<b>A Chest</b>	32	34	36	38	40	42	44	46	48	50	52	54	56	58
<b>B Body Length</b>	25	25.5	26	26.5	27	27.5	28	28.5	29	29	29.5	29.5	29.5	29.5
<b>C Shoulder</b>	15	15.5	16	16.5	17	17.5	18	18.5	19	19.5	20	20.5	21	22
<b>D Sleeve</b>	22	22.5	23	23.5	24	24.5	25	25.5	26	26	26.5	26.5	26.5	26.5

## PULLOVER STYLE

	XS	S	M	L	XL	XXL	3XL							
<b>Size</b>	<b>32</b>	<b>34</b>	<b>36</b>	<b>38</b>	<b>40</b>	<b>42</b>	<b>44</b>	<b>46</b>	<b>48</b>	<b>50</b>	<b>52</b>	<b>54</b>	<b>56</b>	<b>58</b>
<b>A Chest</b>	32	34	36	38	40	42	44	46	48	50	52	54	56	58
<b>B Body Length</b>	23.5	24	24.5	25	25.5	26	26.5	27	27.5	28	28.5	28.5	28.5	28.5
<b>C Shoulder</b>	15	15.5	16	16.5	17	17.5	18	18.5	19	19.5	20	20.5	21	22
<b>D Sleeve</b>	22	22.5	23	23.5	24	24.5	25	25.5	26	26	26.5	26.5	26.5	26.5



### Important sizing information:

Measurements indicated on our sizing chart are the **finished size of the sweater, not the person wearing it and not sport coat size**. For example, if your chest measures 38" and you order size 38, it will be **skin tight**. Since everyone has a different fashion sense, only you can determine how much looseness you want. The average is 4-8" bigger than actual chest measurement. Please use the chart above to determine the appropriate chest size. To get correct body and sleeve length, add or subtract in inches according to the chart above for perfect fit. For example, you might order size 46 +2.5" Body length +1" Sleeve length.

Note: Shoulder width is not adjustable. Be careful measuring, as custom made sweaters are not returnable due to improper fit.